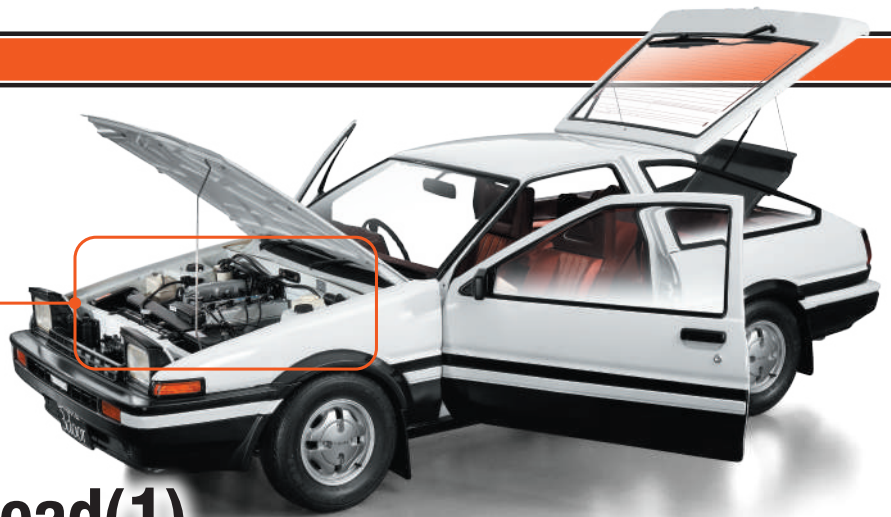


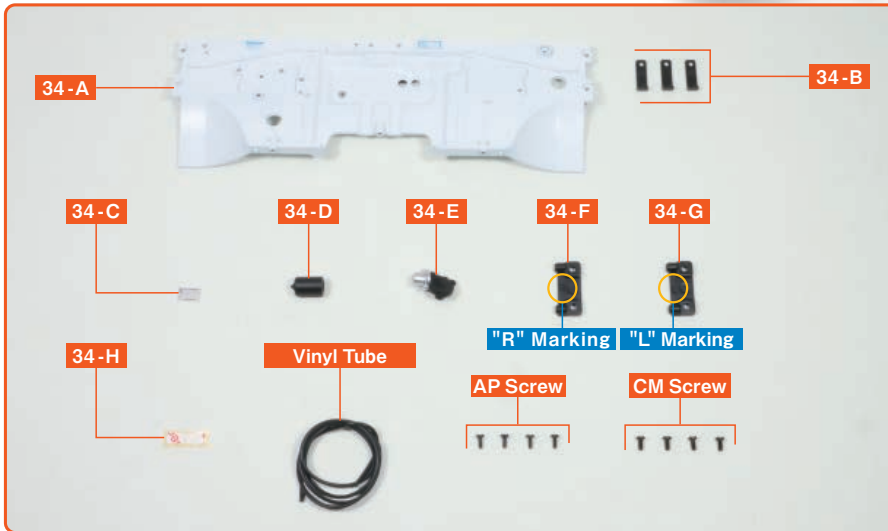
## Issue 34

In this issue, we will begin assembling the engine bay. Start by assembling the bulkhead, then attach the fuel system injector wires to the cylinder head of the engine.



# Assemble the Bulkhead(1) and attach the Injector Wires

※ In this guide "Left" or "(L)", and "Right" or "(R)", refer to the direction as viewed from the driver's seat.



- 34-A Bulkhead
- 34-B Cord Clamp×3
- 34-C VIN Plate
- 34-D Windscreen Wiper Motor
- 34-E Windscreen Wiper Motor Bracket
- 34-F Bulkhead Bracket (R)
- 34-G Bulkhead Bracket (L)
- 34-H Double-sided Tape×1+Spare
- AP Screw (1.7×4mm) ×4+Spare
- CM Screw (2.0×4mm) ×4+Spare
- Vinyl Tube

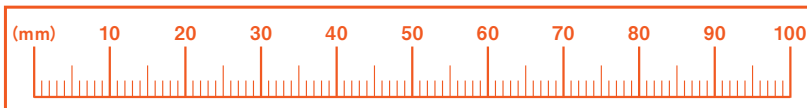
※The parts used in this assembly guide may differ in certain specifications from the parts supplied.  
 ※Unless otherwise specified in the assembly instructions, please use a No. 1 Phillips screwdriver for assembly.

View the follow-along video

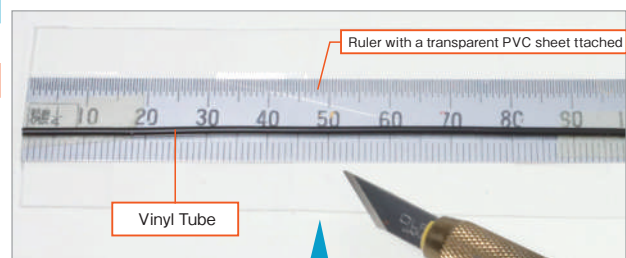
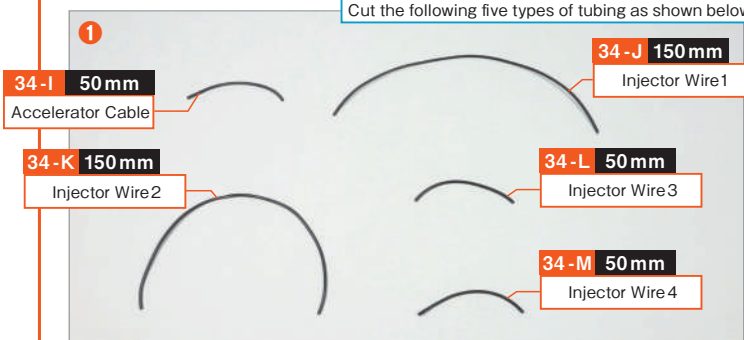


※Due to the model's design, the shapes of some parts may differ from those of the real vehicle.

### step 1 Prepare the wiring

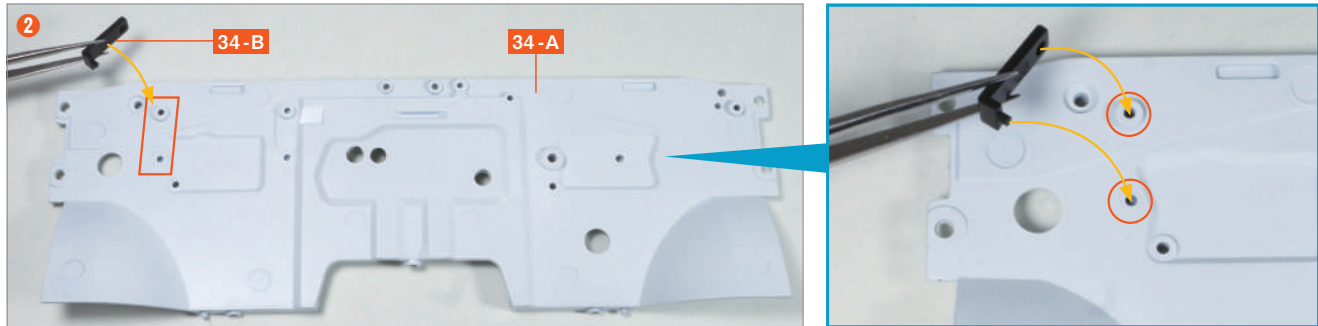


Cut the tubes used in Steps 2 and 3 from the vinyl tube. Use the ruler on the left, or make a simple measuring tool as shown below, then cut the tubing to length with a craft knife or scissors while measuring carefully.

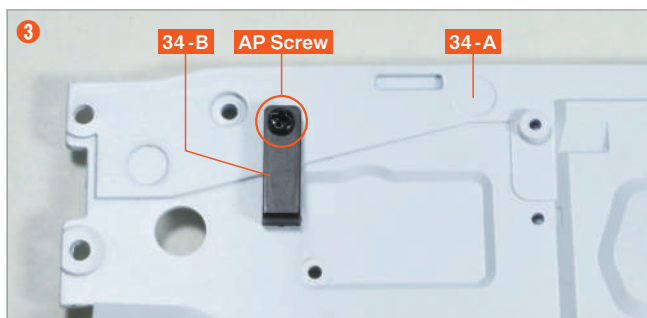


To avoid damaging the ruler, attach a transparent PVC sheet to the ruler, temporarily secure the vinyl tube with double-sided tape, and cut it with a craft knife.

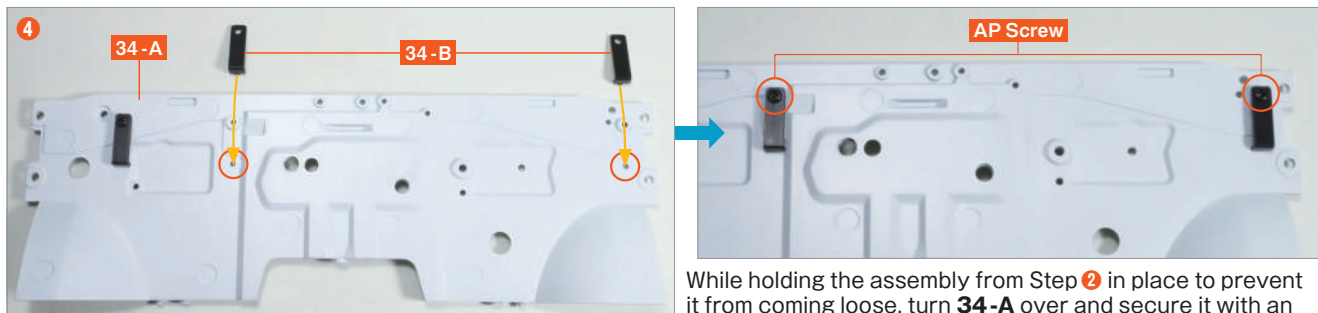
## step 2 Assemble the Bulkhead



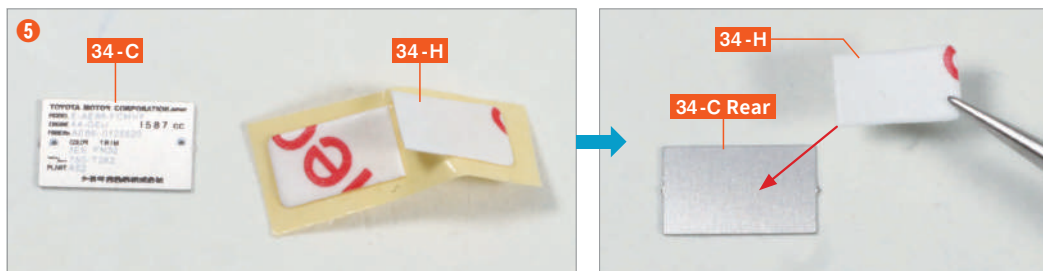
Insert the protrusion of the **34-B Cord Clamp** into the hole in the **34-A Bulkhead** and fit them together.



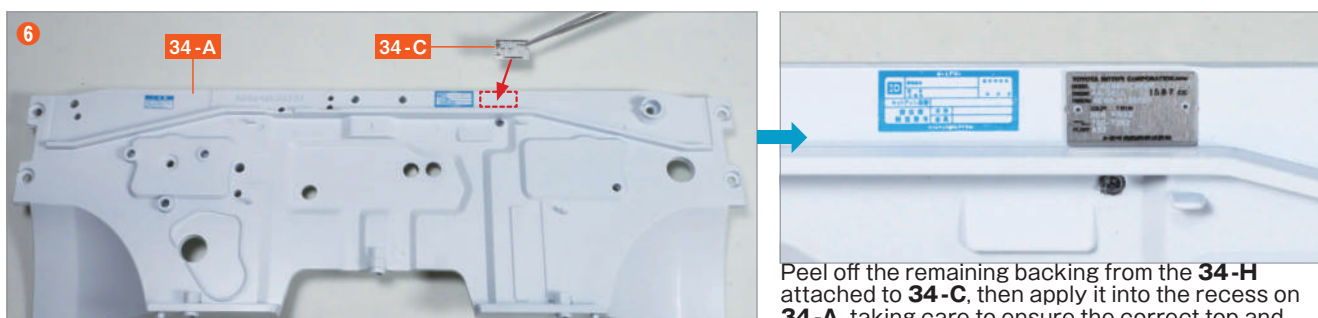
Align the screw holes of **34-A** and **34-B**, then secure them with an **AP screw**.



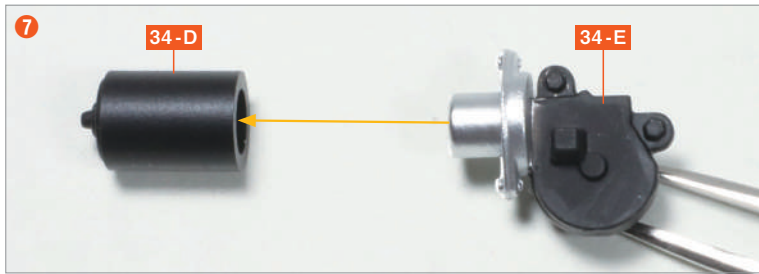
While holding the assembly from Step **2** in place to prevent it from coming loose, turn **34-A** over and secure it with an **AP screw**.



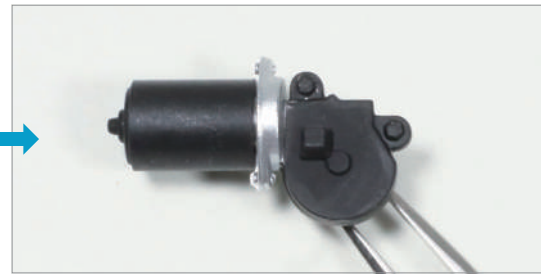
Cut one piece from the two **34-H Double-sided Tape** sheets, peel off one side of the backing, and apply it to the reverse side of the **34-C VIN Plate**.



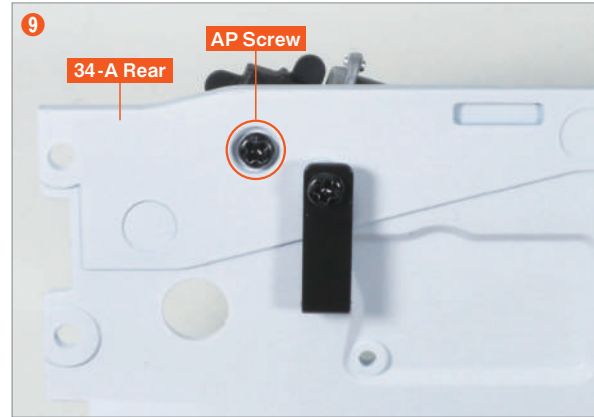
Peel off the remaining backing from the **34-H** attached to **34-C**, then apply it into the recess on **34-A**, taking care to ensure the correct top and bottom orientation.



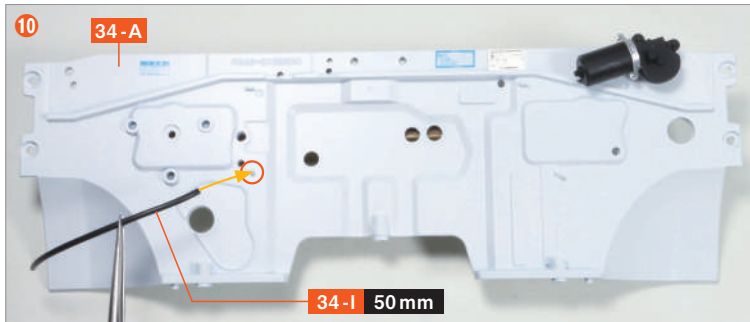
Fit the protrusion of the **34-E Windscreen Wiper Motor Bracket** into the hole in the **34-D Windscreen Wiper Motor**.



Fit the protrusion of the **34-E** assembly from Step 7 into the notch in **34-A**.



While holding the assembly from Step 7 in place to prevent it from coming loose, turn **34-A** over and secure it with an **AP screw**.



Insert the **34-I Accelerator Cable** cut in Step 1 into the protrusion on **34-A**.



**Step complete**

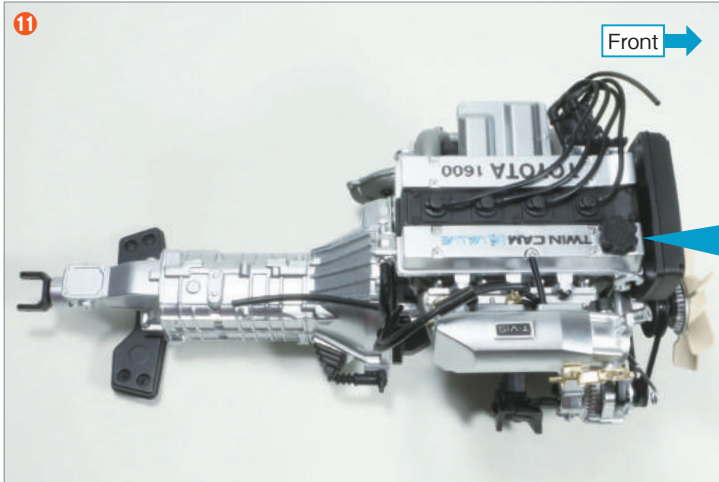


### If You Are Concerned About Paint Damage

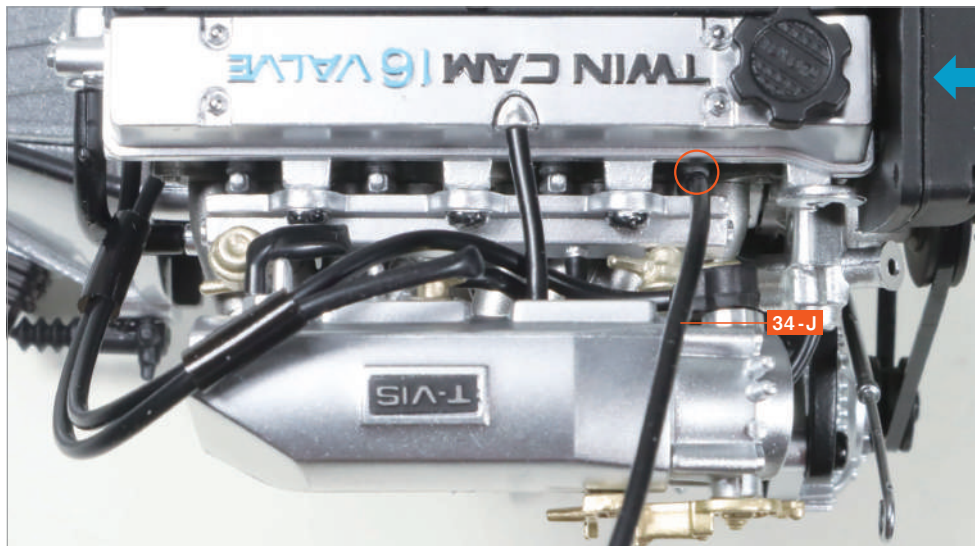
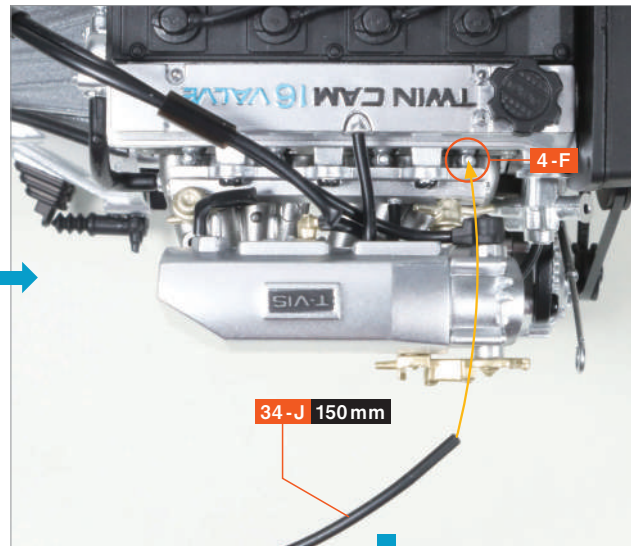
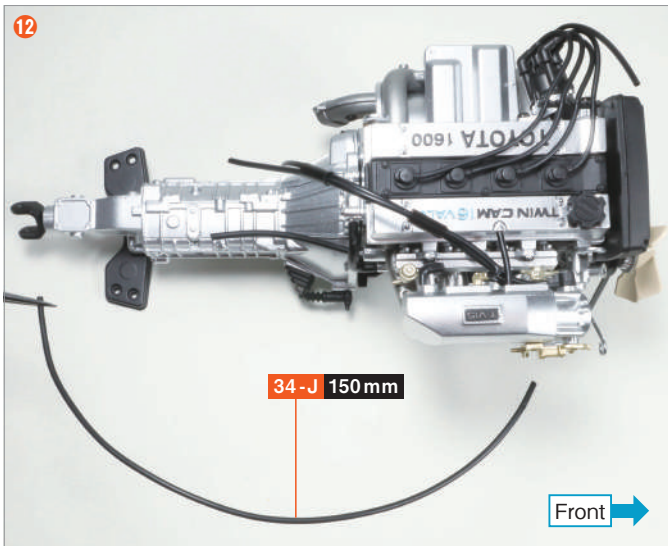
When tightening the AP screw in Step 9, the screw may pass through to the front side and cause some of the paint to chip. If this damage is noticeable, it can be repaired by applying a white marker or covering it with a sticker. In this example, white correction fluid (correction pen) was used.



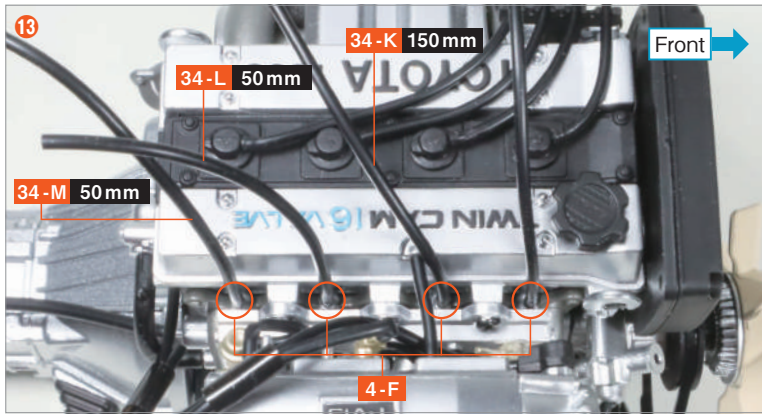
**step 3 Attach the Injector Wires to the Engine**



Prepare the engine assembled up to Issue 15, and check the positions where the injector wires cut in **Step 1** will be attached. Connect the injector wires to the protrusions on the **4-F Fuel Injectors** assembled in Issue 4.

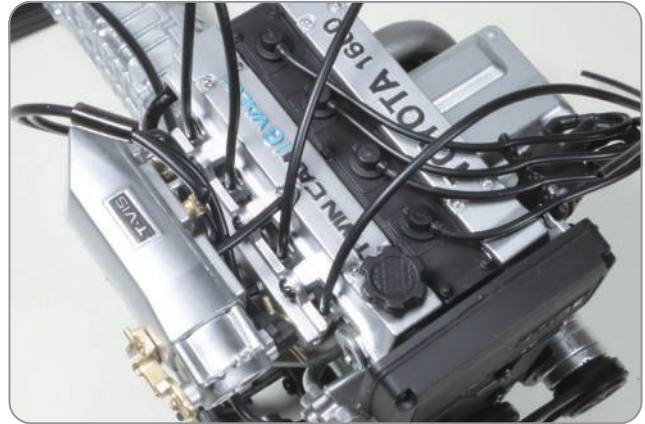
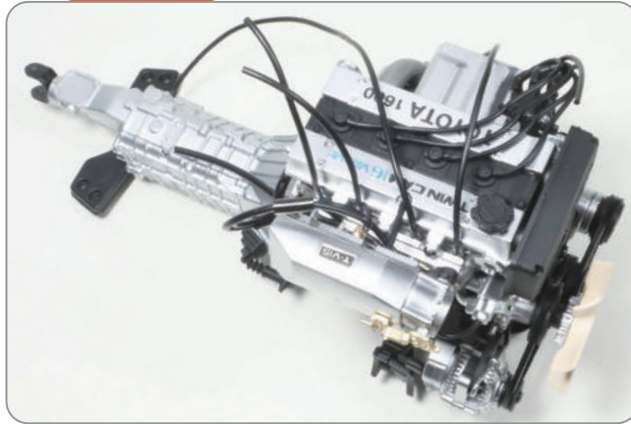


First, insert the **34-J Injector Wire 1** into the protrusion on the first **4-F Fuel Injector** from the front of the engine.



Next, working from the front in order, insert the **34-K Injector Wire 2** into the second protrusion on **4-F**, the **34-L Injector Wire 3** into the third protrusion, and the **34-M Injector Wire 4** into the fourth protrusion.

## Step complete



## Complete

The assembly for Issue 34 is complete.

The windscreen wiper motor and accelerator cable have now been fitted to the bulkhead, and the injector wires have been attached to the engine.

The 34-F Bulkhead Bracket (R), 34-G Bulkhead Bracket (L), and four CM screws will be used in a later issue, so please keep them in a safe place to avoid losing them.

In Issue 35, you will attach additional parts to the bulkhead.

